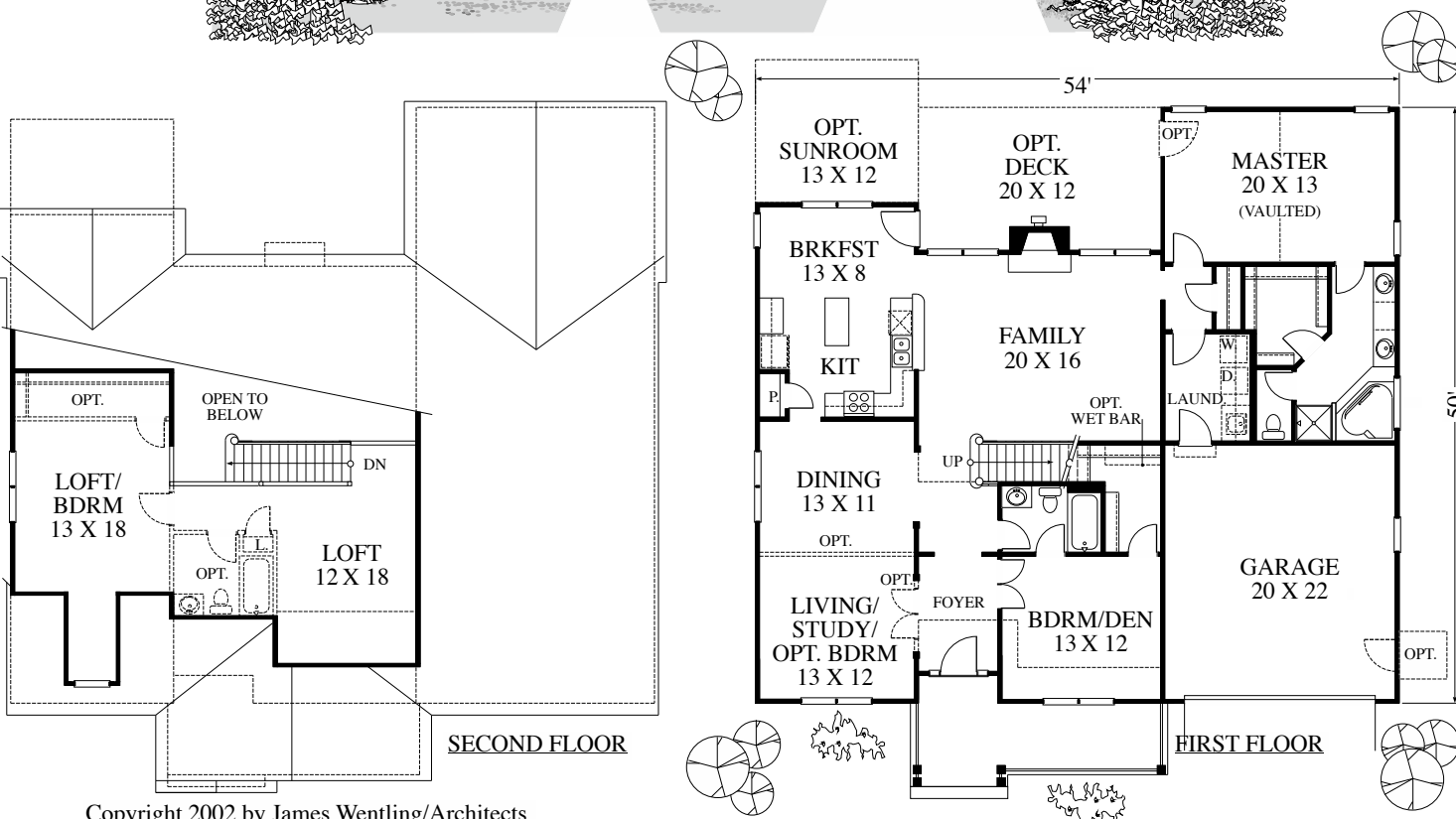


MODEST MOVE-UP



Copyright 2002 by James Wentling/Architects

122-01 D THE DUNHAM 1891/2430 SQ FT

This design can function as a three bedroom ranch plan, or a larger two story with the second floor added. The plan has flexibility and many features that appeal to empty nesters looking for primarily first floor living with auxillary rooms above. The elevation includes a useable front porch and a dormer window. This plan is documented with a slab foundation.

PRICE C

JAMES WENTLING / ARCHITECTS

PRICE C